

Centerpointe Business Park

INDUSTRIAL FOR LEASE

779,016 SF Cross Dock Building



23400 CACTUS AVENUE
Building 4 • Moreno Valley, California

Building Features

- 2,000 SF of Office Area (Expandable)
- 135 Trailer Parking Stalls
- 112 (9' x 10') Dock High Doors
- 4 (12' x 14') Ground Level Ramps
- 600 Amps, 277/480 Volts (Expandable)
- 50' x 52' Bay Spacing
- 445 Car Parking Spaces
- E.S.F.R. Sprinkler System
- 32' Minimum Ceiling Clearance
- Two - 199' Fully Secured Truck Courts
- 2.5% Skylights



Our Knowledge is your Property®

Centerpointe Business Park

INDUSTRIAL FOR LEASE

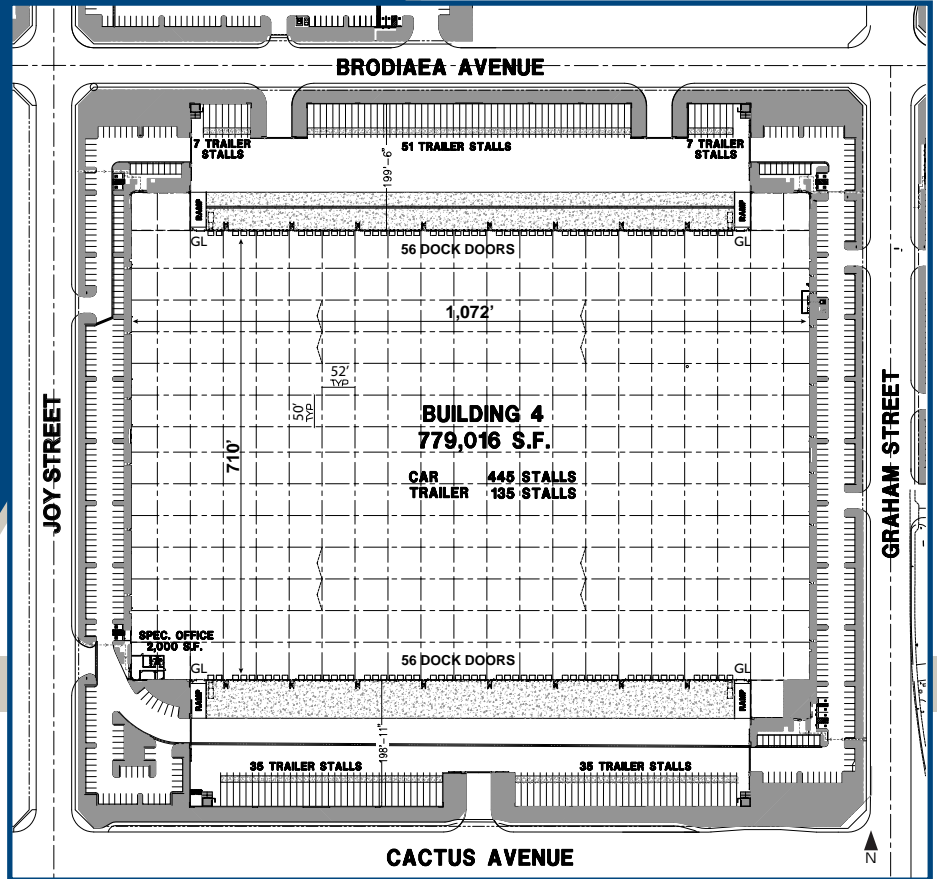
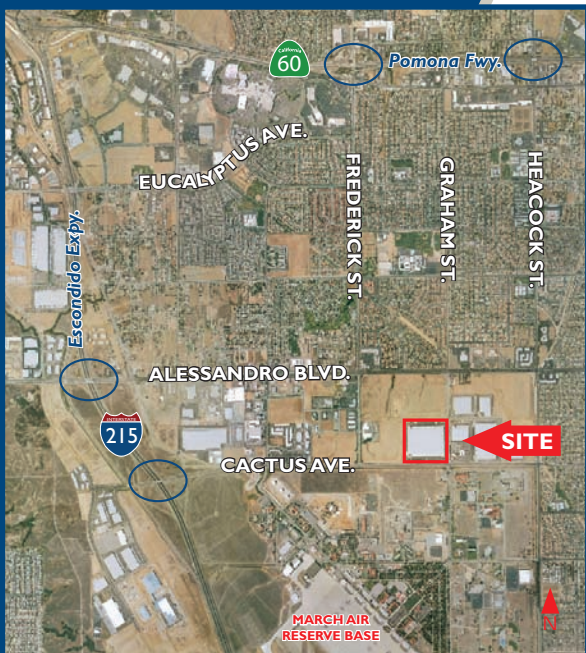
779,016 SF Cross Dock Building

Site Plan

23400
CACTUS
AVENUE

Building 4
Moreno Valley,
California

Aerial



For more information, please contact:

THOMAS E. TAYLOR
909.612.2614
thomas.taylor@colliers.com
License No. 00598896

STEVEN J. BELLITTI
909.612.2617
steve.bellitti@colliers.com
License No. 01048797



This document has been prepared by Colliers International for advertising and general information only. Colliers International does not guarantee, warrant or represent that the information contained in this document is correct. Any interested party should undertake their own inquiries as to the accuracy of the information. Colliers International excludes unequivocally all inferred or implied terms, conditions and warranties arising out of this document and excludes all liability for loss and damages arising there from.

Our Knowledge is your Property®